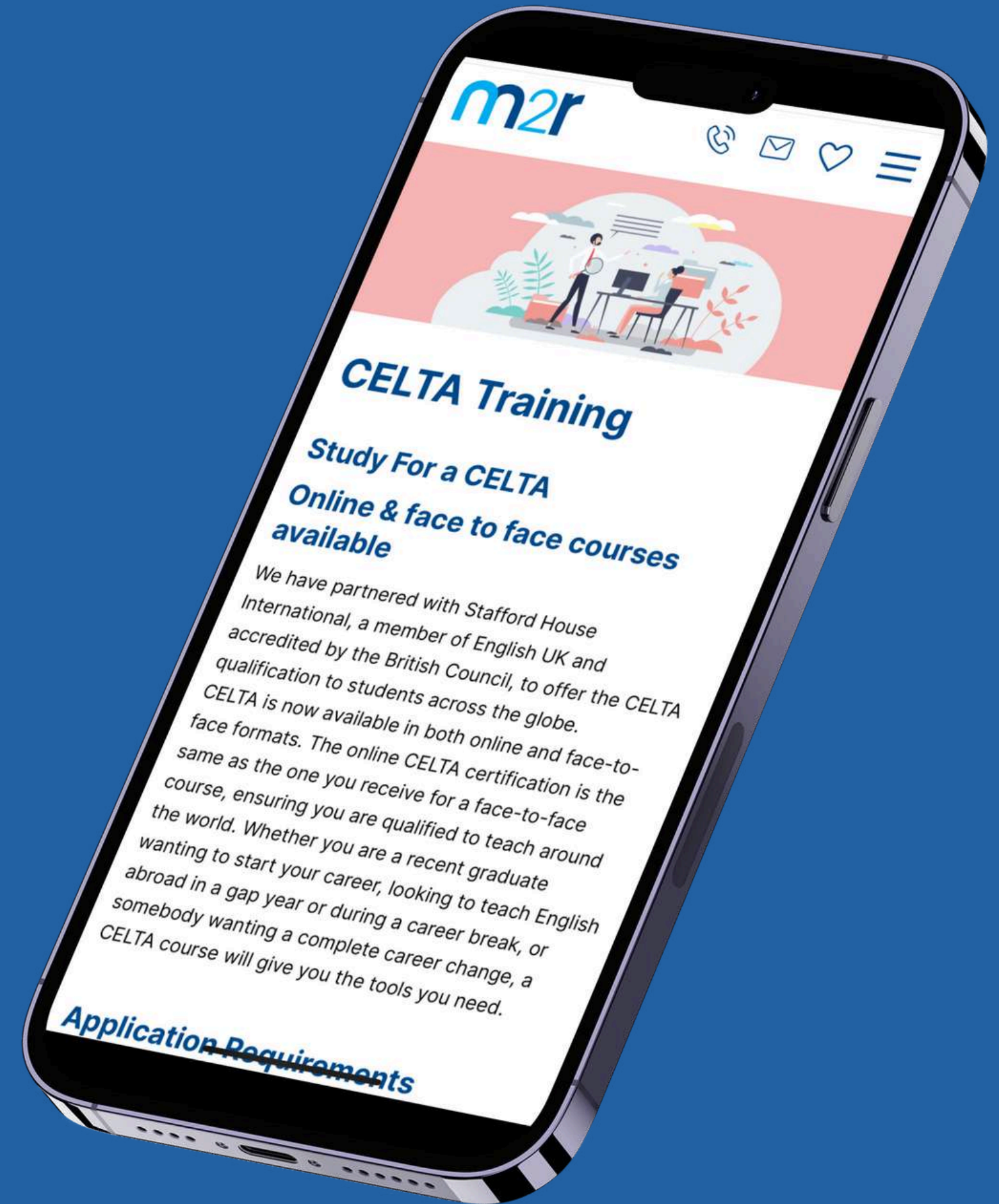




Face-Face | Online | Hybrid

# CELTA courses from m2r Education





# Introduction

m2r Education are a UK based, multi award winning company offering bespoke education services to over 40 countries. We have partnered with Stafford House International, a member of English UK and accredited by the British Council, to offer the CELTA qualification to students across the globe.



CELTA is now available in both online and face-to-face formats. The online CELTA certification is the same as the one you receive for a face-to-face course, ensuring you are qualified to teach around the world.

Whether you are a recent graduate wanting to start your career, looking to teach English abroad in a gap year or during a career break, or somebody wanting a complete career change, a CELTA course will give you the tools you need.



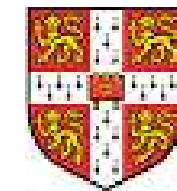
# Why Get A CELTA?

Do you want to live in Mexico, Hong Kong, Italy or Dubai? The University of Cambridge CELTA (Certificate in English Language Teaching to Adults) could be the best way to achieve your travel goals.

Our partners Stafford House offers a rigorous CELTA training programme either taught at their London school, or online that will provide you with the practical tools you will need to find success in the field of teaching ESL/EFL.

The small trainee group sizes and close attention to the needs of all students will ensure that you receive the personal attention and support needed to meet the challenges of the course.

Our experienced teacher trainers are knowledgeable, passionate and dedicated to giving all CELTA candidates the best training available. The Stafford House CELTA has been designed to ensure candidates access a quality curriculum for the duration of the course.

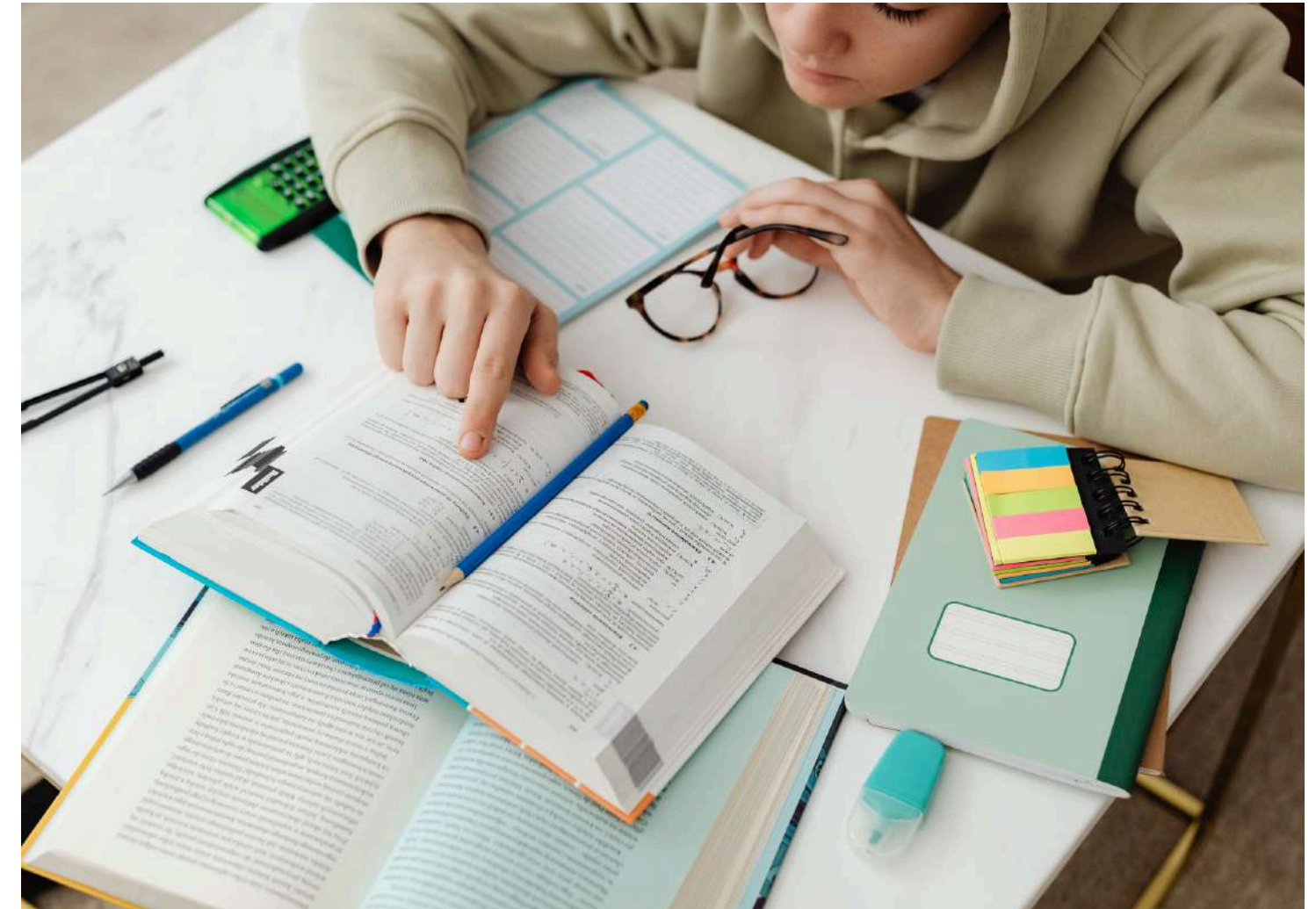


**CAMBRIDGE**  
English

# Application Requirements

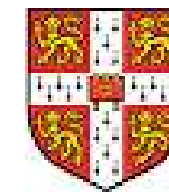
If you are interested in achieving a CELTA you should consider these entry requirements and standard English levels.

- English language proficiency at C1 or C2 Cambridge English levels
- Minimum age of 18
- Similar education experience needed for higher education
- The potential to become an effective English Language teacher
- The ability to complete assignments and assessments
- The ability to research and understand grammar
- Adequate competence in written and spoken English



## Course Fees

- o £1475 for all courses
- o £1350 early bird fee if paid for in full at least 21 days before the course starts.



**CAMBRIDGE**  
English

# Online Celta - Full Time

All online CELTA courses carry the same certification you'll receive for a face-to-face CELTA course.

Zoom video conferencing platform is used for teaching practice and live classes, and a Moodle learning platform with Cambridge University approved materials which all trainee teachers will have access to during and after the course.

All full-time online CELTA programme runs from Monday to Friday 9:30 - 17:30 UK time, with study breaks.

If you want to finish your CELTA quickly with daily classes and shorter length programme, studying full-time online is right for you. Each programme is 4 weeks long and a minimum of 120 hours.

## Full-time Online Course Dates

### 2024

- 08 Jan - 02 Feb
- 08 Jul - 02 Aug
- 09 Sep - 04 Oct
- 25 Nov - 20 Dec



# Online CELTA - Part Time

All part-time online CELTA programmes are between 10-12 weeks long and consists of online teaching practice sessions on evenings and weekends with online learning modules that trainees study in their own time.

CELTA part-time online programme is the perfect fit for trainees looking to study during evenings or weekends.

## Part-time Online Course Dates

### 2024

- 16 Jan - 09 Apr: Teaching practice on Tuesdays 17:30 – 22:30
- 08 Feb - 02 May: Teaching practice on Thursdays 17:30 – 22:30
- 06 Mar - 29 May: Teaching practice on Wednesdays 17:30 – 22:30
- 13 Apr - 06 Jul: Teaching practice on Saturdays 10:00 – 22:30
- 07 May - 30 Jul: Teaching practice on Tuesdays 17:30 – 22:30
- 06 Jun - 29 Aug: Teaching practice on Thursdays 17:30 – 22:30
- 17 Jul - 09 Oct: Teaching practice on Wednesdays 17:30 – 16:00
- 10 Aug - 02 Nov: Teaching practice on Saturdays 10:00 – 22:30
- 10 Sep - 03 Dec: Teaching practice on Tuesdays 17:30 – 22:30
- 26 Sep - 19 Dec: Teaching practice on Thursdays 17:30 – 22:30
- 23 Oct - 29 Jan 2025: Teaching practice on Wednesdays 17:30 – 16:00

# CELTA- Online & Face to Face

The hybrid approach of online and face to face learning that the Mixed Mode CELTA employs offers all trainees the best of both worlds and the opportunity to gain valuable experience of the modern teaching landscape, learning methods appropriate to teaching both online and in person.

The Mixed Mode CELTA courses carry the same certification you'll receive for a face-to-face CELTA course.

The online segment is 7 weeks long and consists of 4 hour online teaching practice sessions on Monday evenings (6 - 10pm UK time), with online learning modules that trainees study in their own time.

The face-to-face segment is 2 weeks long and consists of full time teacher training (Monday - Friday 9.30am - 5.30pm UK time with study breaks).

## Face to Face & Online Course Dates

### 2024

- 17th June - 16th August
- Monday and Wednesday evenings online from 6:00 – 10:00 pm
- 2 weeks full time face to face from 9:30am – 5:30 pm



# CELTA - Face to Face (Full Time)

If you want to finish your CELTA quickly with daily classes and shorter length programme, studying full-time is right for you.

A full-time programme is taught in Stafford House's Central London school in Bloomsbury.

Each programme is 4 weeks long and a minimum of 120 hours.

In-school courses run Monday to Friday 9:30 - 17:30 UK time, with study breaks.



## Full-time Face to Face Course Dates

### 2024

- 08 Jan - 02 Feb
- 05 Feb - 01 Mar
- 04 Mar - 29 Mar
- 01 Apr - 26 Apr
- 06 May - 31 May
- 03 Jun - 28 Jun
- 01 Jul - 26 Jul
- 05 Aug - 30 Aug
- 02 Sep - 27 Sep
- 30 Sep - 25 Oct
- 28 Oct - 22 Nov
- 25 Nov - 20 Dec



# CELTA - Face to Face (Part Time)

The CELTA in-school part-time programme is the perfect fit for trainees looking for face-to-face evening and weekend classes.

10-12 week and 24 week options are offered in central London.

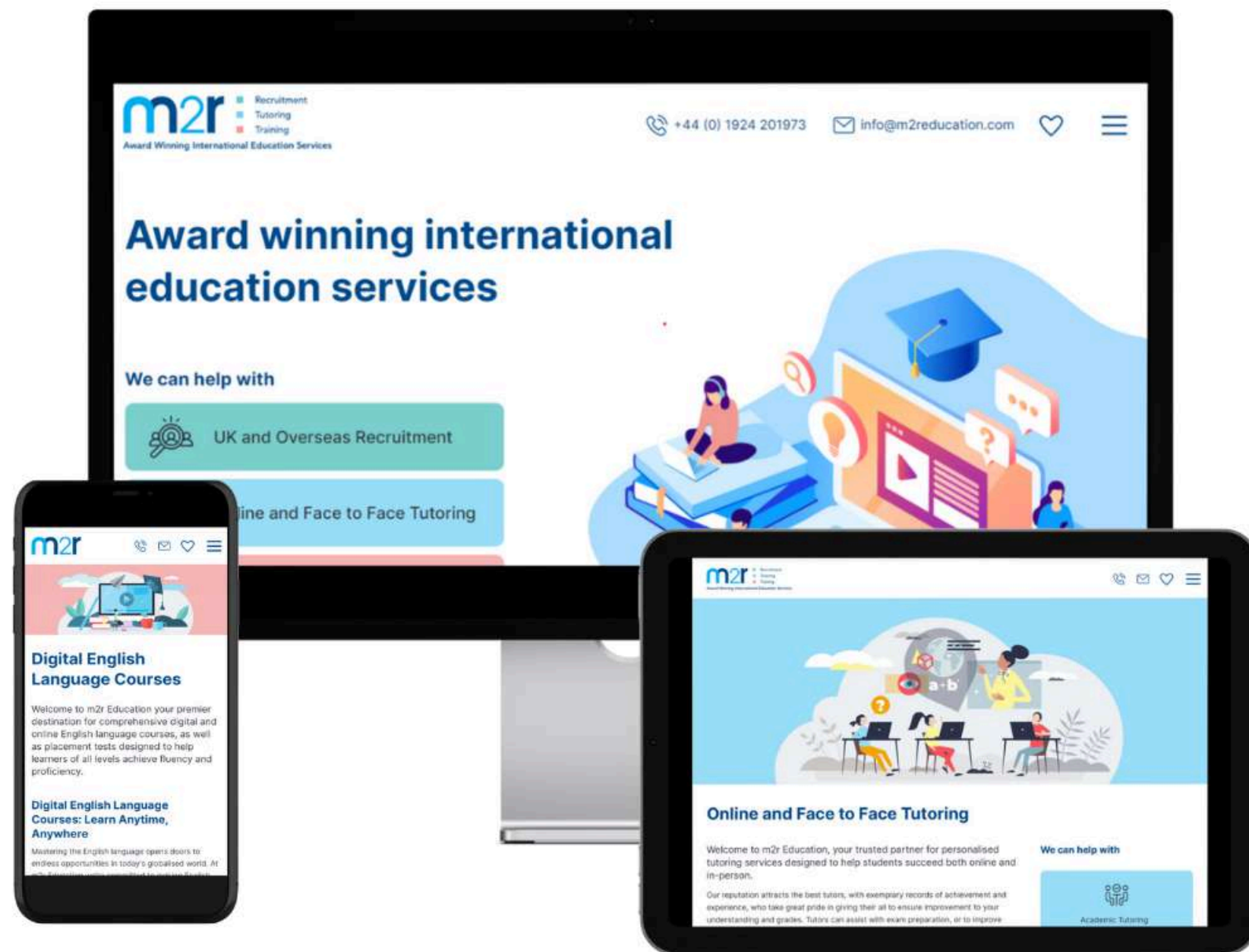


## Part-time Face to Face Course Dates

### 2024

- 20 Jan - 06 Apr alternate Saturdays 10:00 – 17:00 and every Monday and Wednesday 18:15 – 21:30
- 03 Feb - 13 Jul (24 weeks) one evening per week: Tuesday 18.15-21.30 first Saturday of every month 10.00-17.00
- 01 Jun - 17 Aug alternate Saturdays 10:00 – 17:00 and every Monday and Wednesday 18:15 – 21:30
- 07 Sep - 23 Nov alternate Saturdays, 10:00 – 17:00 and every Monday and Wednesday 18:15 – 21:30

# Additional Services



## Digital EAL Courses

Academic / Vocational / General courses

## EAL Teacher training courses

CELTA Courses - Online / Face to Face / Blended  
TEFL Courses - Online

## Recruitment

In country supply for academic and vocational roles.  
Online full time and part time supply.

## Paid teaching internships

Up to 1yr paid secondment teaching EAL in SE Asia.

# FOR MORE INFORMATION

canwehelp@m2reducation.com  
www.m2reducation.com  
+441924 201973 (Office)  
+447770 865741 (WhatsApp)



Scan this code to connect on WhatsApp



■ Recruitment  
■ Language Training  
■ Tutoring

The logo for m2r features the letters 'm2r' in a stylized font. The 'm' is light blue, the '2' is dark blue, and the 'r' is a medium blue. To the right of the logo is a legend with three colored squares: light blue for 'Recruitment', dark blue for 'Language Training', and medium blue for 'Tutoring'.

Award Winning International Education Services

